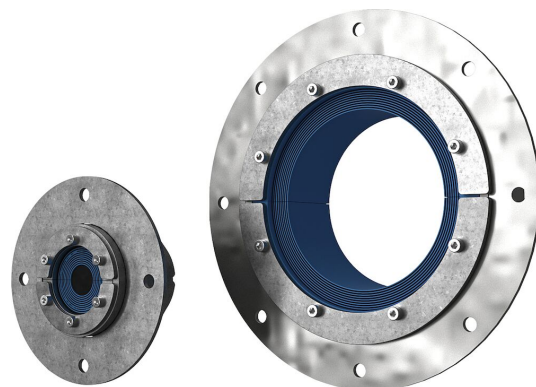




# Bague Roxtec RS avec SLF RS

Solution étanche pour câble ou tuyauterie unique.

La Roxtec RS avec SLF RS est une bague avec une douille en métal pour un câble ou une tuyauterie unique. Le passage étanche est constitué de deux parties avec des couches pelables pour s'adapter à des câbles et des tuyauteries de différentes tailles. La douille se boulonne à la structure.



- Installation facile et rapide
- Assure un excellent maintien des câbles

## Caractéristiques du produit



Coupe-feu



Étanche à l'eau



Étanche au gaz

## Structure d'installation



Panneau sandwich



Métal



Plâtre

## Type de fixation



Boulonnage

## Classements et certificats

### Feu

- CLASSE A conformément au code FTP IMO 2010
- Classement E/EI selon EN 13501
- Classement E/EI selon EN 45545 E30
- Classement F/T selon UL 1479
- CLASSE H selon IMO 2010 FTP Code + Courbe de charge calorifique HC
- Jetfire selon ISO 22899-1 et OTI 95634

### Étanchéité

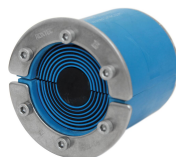
- Gaz: 2,67 bars (catastrophique)
- Eau: 4 bars (catastrophique)

## Éléments d'étanchéité

### Éléments d'étanchéité



Douille SLF RS



Bague RS



Lubrifiant Roxtec

Pour plus d'informations, veuillez consulter [roxtec.com](https://www.roxtec.com).



The product information provided by Roxtec does not release the purchaser of the Roxtec system, or part thereof, from the obligation to independently determine the suitability of the products for the intended process, installation and/or use.

Roxtec gives no guarantee for the Roxtec system or any part thereof and assumes no liability for any loss or damage whatsoever, whether direct, indirect, consequential, loss of profit or otherwise, occurred or caused by the Roxtec systems or installations containing components not manufactured by an authorized manufacturer and/or occurred or caused by the use of the Roxtec system in a manner or for an application other than for which the Roxtec system was designed or intended.

Roxtec expressly excludes any implied warranties of merchantability and fitness for a particular purpose and all other express or implied representations and warranties provided by statute or common law. User determines suitability of the Roxtec system for intended use and assumes all risk and liability in connection therewith. In no event shall Roxtec be liable for indirect, consequential, punitive, special, exemplary or incidental damages or losses.

The Roxtec products are offered and sold in accordance with the conditions of the Roxtec General Terms of Sales. The latest version of the Roxtec General Terms of Sales can be downloaded from <https://www.roxtec.com/en/about-us/about-roxtec/general-terms-of-sales/>

We reserve the right to make changes to the product and technical information without further notice. Any errors in print or entry are no claims for indemnity. The content of this publication is the property of Roxtec International AB and is protected by copyright.

This document was generated on: 2024-04-19